

# MULTI-FUNCTION SPIKE PULLER

MODEL MSP





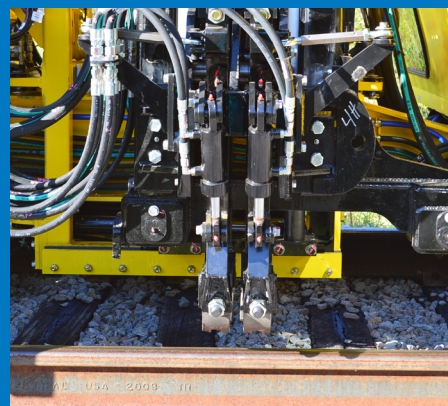


# MULTI-FUNCTION SPIKE PULLER

## MSP

Harsco Rail's new Multi-Function Dual Rail Spike Puller (MSP) integrates the latest technology and multiple functions into one highly productive machine.

The Multi-Function Spike Puller is one of the family of new machines designed to bring automation, high production, commonality and overall cost savings to your track maintenance projects.



## SPECIAL FEATURES

The Multi-Function Spike Puller is capable of pulling up to 8 spikes simultaneously, even when operating on tracks where both line spikes and anchor spikes are present. This is where comparisons to previous spike pullers stop. The MSP is designed to incorporate features that can help increase production as well as reduce the number of machines and operators needed in most operations.

Vision systems, paint recognition, collision avoidance and tie mapping all use breakthrough technology to help automate the machines. Features such as gauge measurement, paint marking, dust suppression and material reclamation are relatively simple functions that can be added to make the machine more versatile.

## FEATURES

### Comfortable Operators' Cab

Climate-controlled with seating for 2 operators and up to 3 riders.

### Easily adjustable workheads

Effective in pulling rail and anchor spikes. Optional kits available for pulling screw spikes for removing certain types of SafeLok clips.

### Common parts

Designed with components used on other Harsco track-maintenance machines. Reduces the number of different parts required to be kept on hand.

### Drive

Two-axle chain drive. Equipped with 3 1/2" axles for rugged dependability. Pivoting rear axle.

### Redundant Safety Systems

Equipped with travel interrupt bars to safely alert the machine if something is fouling the track ahead.

### Easy-access maintenance points

Open design and remote lubrication reduce maintenance time.

### Hydraulic Brakes

Spring-applied, hydraulic-released brakes eliminate the need for a pneumatic system.

### Tier IV Compliant diesel engine

Other engine options are available.

### Jupiter Control System

Harsco Rail's rugged and scalable distributed I/O control system provides comprehensive diagnostics, data recording and a simplified electrical system.

## OPTIONAL FEATURES

### Tie Plate Brooms

Sweeps the tie plate area for easier access to spikes being pulled. Contributes to higher production and may eliminate a machine in a tie gang consist.

### Paint Recognition System

Capable of "seeing" paint marks and alerting the machine to perform a function.

### Track Gauge Measurement

The adjustable track gauge measurement device continually monitors the track gauge and alerts the operator when wide gauge is detected. In many operations, this can replace a machine and operator.

### Spike Reclaimer Trailer

The Spike Reclaimer Trailer works behind the MSP Spike Puller, picking up the used spikes that have just been pulled. It is equipped with assisted travel, powered by the MSP. The Spike Reclaimer can hold up to 4,000 used spikes and can dump them on either side of the track. This feature can help reduce manpower and machine requirements without sacrificing productivity.

### Safety Systems

Equipped with emergency stop bars to safely alert the machine if something is fouling the track ahead.

**Fastener Workhead Kits** Kits available to allow for the pulling of screw spikes and for removing certain types of SafeLok clips. Get more utilization of your equipment.

### Dust-Suppression System

The water-spray system located near the front of the machine helps keep dust down from tie plate brooming operations.

### Auto-Indexing

By combining the Paint Recognition System with Harsco's proven Tie Finder technology, the machine can be automatically indexed to the next tie to have spikes pulled. No more operator overshoot means better production rates.

### Paint Marking System

The Paint Marking System allows the machine to spray paint to indicate ties to be removed or wide gauge for following machines. The paint can be sprayed on the center of the tie to either end.

### Powered or Manual Jack Stands

Powered jack stands at the four corners of the machine provide a safe method to lift the machine if maintenance is required.

### Collision Avoidance System

As part of a complete track safety program, Harsco's Collision Avoidance System will alert operators if the machine gets too close to the machines working around it.

### Compass

Harsco Rail's telematics system monitors the machine's production, location and key data such as engine and hydraulic oil temperature and maintenance reports.





# MULTI-FUNCTION SPIKE PULLER

MSP



## SPECIFICATIONS

Length	323 in.
Width	110 in. (102 in. for shipping)
Height	118 in.
Wheelbase	173.75 in.
Weight	25,000 lbs. (estimated)
Max Travel Speed	Up to 25 mph
Fuel Capacity	100 gal. (sufficient for 16 hours)
Wheels	16 in. diameter
Brakes	Spring-applied, hydraulically released, tread-style Cobra shoes, on both axles
Electrical System	24 VDC
Pneumatic System	None used
Workheads	Eight (8) independently adjustable jaws allow for precise spike pattern adjustment.

Learn more at [harscorail.com](http://harscorail.com)



Updated in USA, August 2019

**Harsco Rail, Harsco Corporation**  
Facility Locations:

**Harsco Rail Global Headquarters**  
3440 Toringdon Way  
Suite 100, Building 3  
Charlotte, NC 28277, USA  
+1 980 960-2624  
[railinfo@harsco.com](mailto:railinfo@harsco.com)

**Harsco Rail Manufacturing Operations**  
2401 Edmund Road, Box 20  
West Columbia, SC 29171-0020, USA  
+1 803 822-9160  
[railinfo@harsco.com](mailto:railinfo@harsco.com)

**Harsco Rail Engineering Center**  
306 West 4th Street  
Fairmont, MN 56031-1837, USA  
+1 507 235-7376  
[railinfo@harsco.com](mailto:railinfo@harsco.com)

**Harsco Rail Manufacturing Operations**  
200 South Jackson Road  
Ludington, MI 49431, USA  
+1 231 843-3431  
[railinfo@harsco.com](mailto:railinfo@harsco.com)

**Protran Technology**  
1960 Old Cuthbert Road, Suite 100  
Cherry Hill, NJ 08034, USA  
+1 856 779-7795  
[info@protrantechnology.com](mailto:info@protrantechnology.com)

**Harsco Rail Pty Ltd Australia**  
4 Strathwyn Street, P.O. Box 5287  
Brendale, Queensland 4500, Australia  
+61 7 3205 6500

**Harsco Rail Ltd United Kingdom**  
Unit 1, Chevton Street, Eastwood  
Nottingham NG16 3HB, United Kingdom  
+44 (0) 1773 539480  
[uksales@harsco.com](mailto:uksales@harsco.com)

**Harsco Rail Ltda Brazil**  
Av. Marechal Câmara, 160 / 1615, Centro  
Rio de Janeiro RJ 20020-080, Brazil  
+55 21 2510-5164 / -5151

**Harsco Rail Europe GmbH**  
Luetticher Str. 130  
40547 Duesseldorf, Germany  
+49 (0) 211 60116 0  
[info.emea@harsco.com](mailto:info.emea@harsco.com)

**Harsco Rail China**  
Room C1201 Tower 2,  
No.36 BeiSanHuan Dong Lu,  
DongCheng District,  
Beijing 100013, P.R. China  
+87 10-6590-6399

**Harsco Track Machines and Services**  
Private Limited India  
2nd Floor, Building Alpha,  
Bengal Intelligent Park Block EP & GP,  
Sector V, Salt Lake, Kolkata  
700091 West Bengal, India  
+91 33 2357 5651

The HARSCO RAIL equipment pictured in this brochure is intended to illustrate the general appearance and features of this product. It is equipped as specified by a particular customer and may or may not show items that are optional or recommended by HARSCO RAIL, Harsco Corporation. Specifications, illustrations, and descriptive materials herein were accurate as known at the time this publication was approved for printing. HARSCO RAIL, Harsco Corporation reserves the right to discontinue models or options at any time or change specifications and materials, equipment and design without notice and without incurring obligation. Federal, State or Provincial, and/or local laws and regulations may require additional equipment for the particular use intended for this product. It is the buyer's responsibility to determine the applicability of such laws and regulations to the buyer's intended use for the product and to arrange for the installation of the required equipment. Other products and companies referred to herein are trademarks or registered trademarks of their respective companies and/or mark holders.